



COMWATCH-2000

Universal Communication Analyzer



\$395
Basic Unit



COMWATCH-2000 Universal Communication Analyzer enables the user to visualize and analyze data communication for different serial interface types like RS-232C and RS-422/RS-485. The COMWATCH-2000 is used to start-up, debug and service communication links in industrial, laboratory and telecommunication environments, as well as in software development. COMWATCH-2000 can actively communicate with a device, in order to test the data coming from the unit. The Script Command Language can be used to write simple to sophisticated testing programs. In Passive Monitoring Mode, Trigger Functions can determine which data should be monitored. The serial data can be analyzed in many ways, during and after capturing. This will enable the user to easily detect the cause of communication problems. The COMWATCH-2000 only requires an IBM compatible 386 PC with a minimum of 4 MB of hard disk space and 4 MB of RAM. The software is fully mouse controlled.

Data Storage

COMWATCH-2000 exploits a large data buffer (up to 10MB!), in either standard or auto-wrapping mode. When the system memory is not large enough, the COMWATCH-2000 can stream the data to the hard drive. Save, Export and Print functions allows you to use the information again and in various applications.

Active Testing Mode

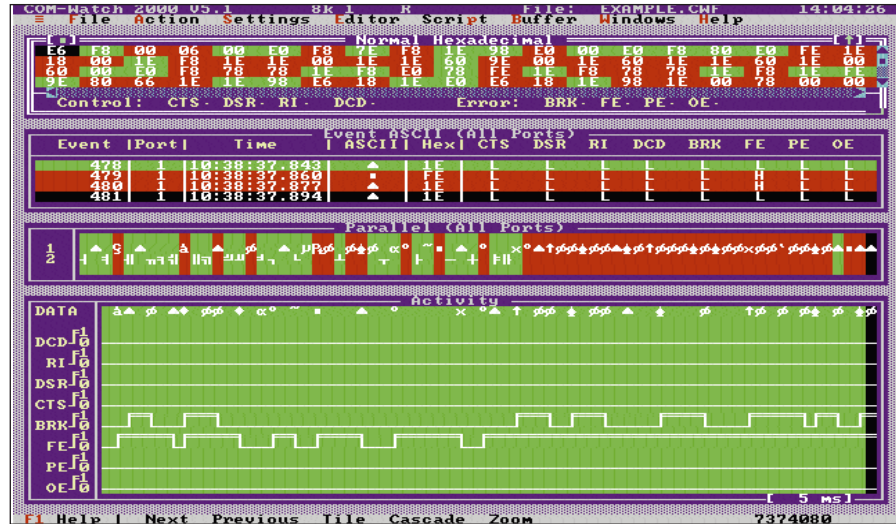
COMWATCH-2000 can be used in the active mode to directly communicate with another device. This includes sending, capturing and playing back data streams.

Passive Monitoring Mode

COMWATCH-2000 can be used in the passive mode to monitor the communication between other devices, without interfering with the communication. A special adapter box is supplied for this purpose.

Multiple Analyze Functions

Many commands are available when the data is captured. Next to the display modes, various search, calculation and statistic functions are provided to serve you. Statistics include average event size and the error and trigger ratios.



Multiple Display Formats

The acquired data can be shown in a wide variety of modes and formats to fit any need: ASCII, Hexadecimal, Decimal, Octal, Mnemonic, EBCDIC and even a User Defined format.

Powerful Trigger Functions

Using the triggers, complex conditions can be created to view only the data you are interested in. Pre-and post triggers as well as file modes are available. Conditions can consist of signal status, data pattern, time and/or date.

Time Stamping

COMWATCH 2000 has the ability to add a time stamp to all events, with a resolution of 1ms. You can choose to add "time only", "time and date" or "relative" stamps.

Playback Feature

Resend data you have captured earlier, with preservation of time delays. In combination with the possibility to edit events, this is an excellent way to test devices against faulty messages.

Script Command Language

The C-like script language allows you to build simple or very powerful applications for interactive or unattended testing. Scripts can also be used to interpret simple protocols.

Windows Compatible

COMWATCH 2000 is compatible with all versions of Windows 3.x and Windows 95. (However, it is a DOS program).

Additional Features

- Flexible user interface with full mouse support
- Diagnostic mode (like hardware break-out box)
- Synchronization of view ports
- Statistical information
- Auto detection of hardware
- Context sensitive hypertext help
- Shell to DOS
- Integrated editor and viewer
- Support for VESA hi-resolution text modes

To Order (Specify Model Number)

Model Number	Price	Description
SWD-COMWATCH-2000	\$395	PC data analyzer software for serial communications
SWD-COMWATCH-422/485	125	Cable for monitoring RS-422/485 Ports

SWD-COMWATCH-2000 software supplied complete with special cable and complete operator's manual.